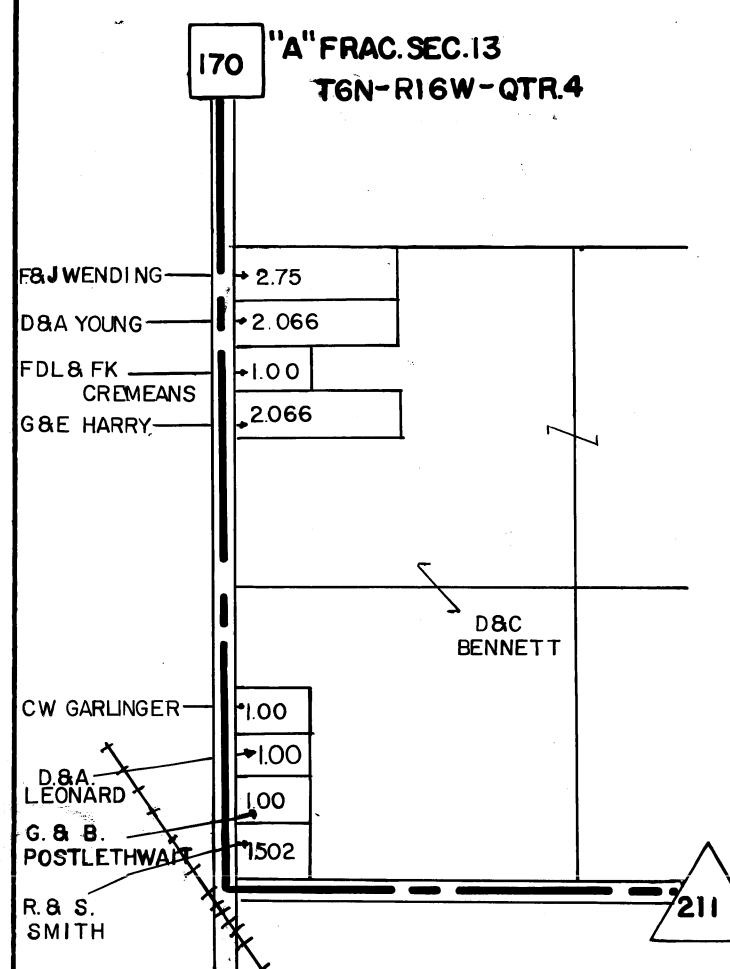


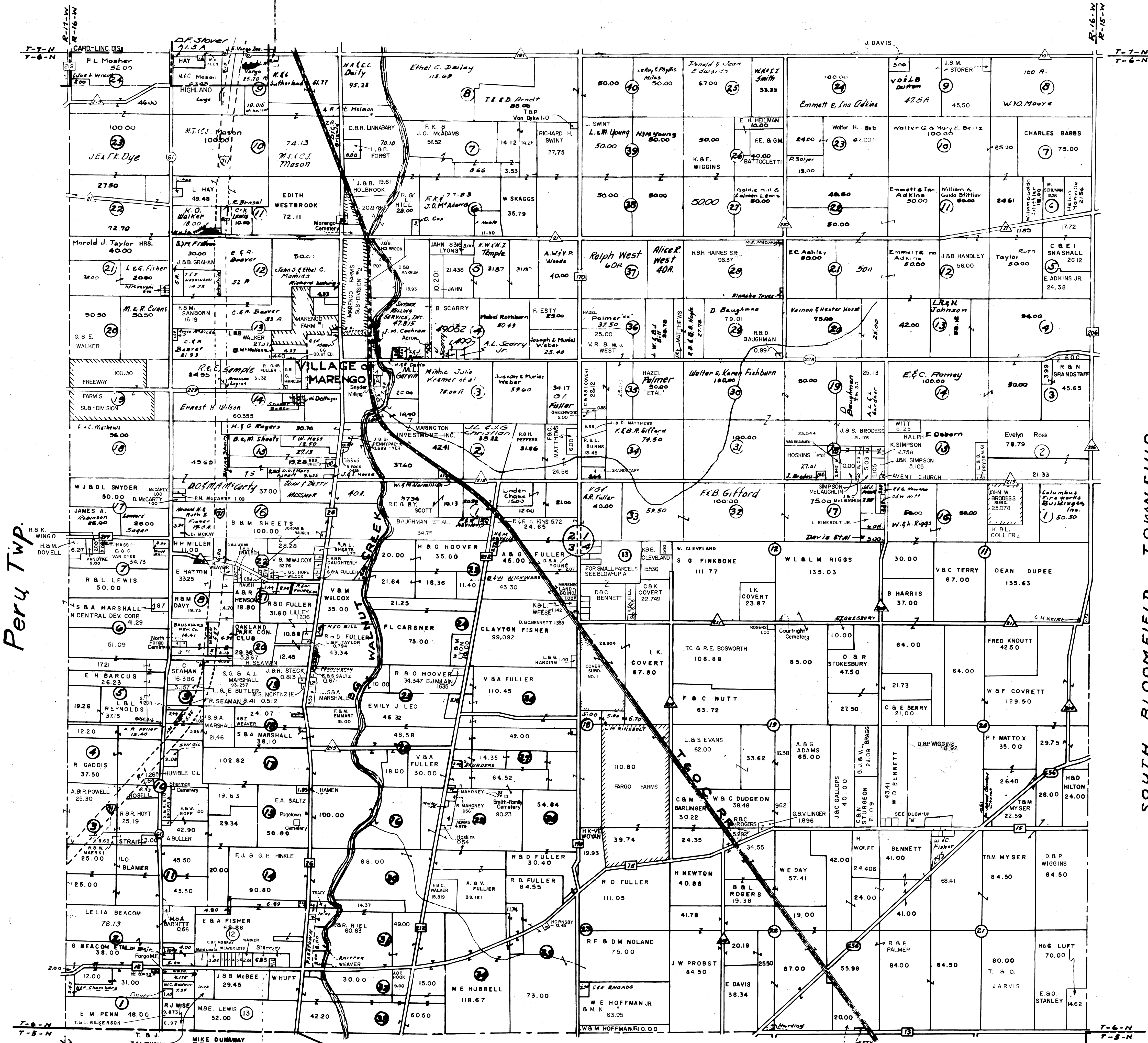
BENNINGTON TOWNSHIP

1963 Township MAPS



LINCOLN TOWNSHIP

HARMONY TOWNSHIP

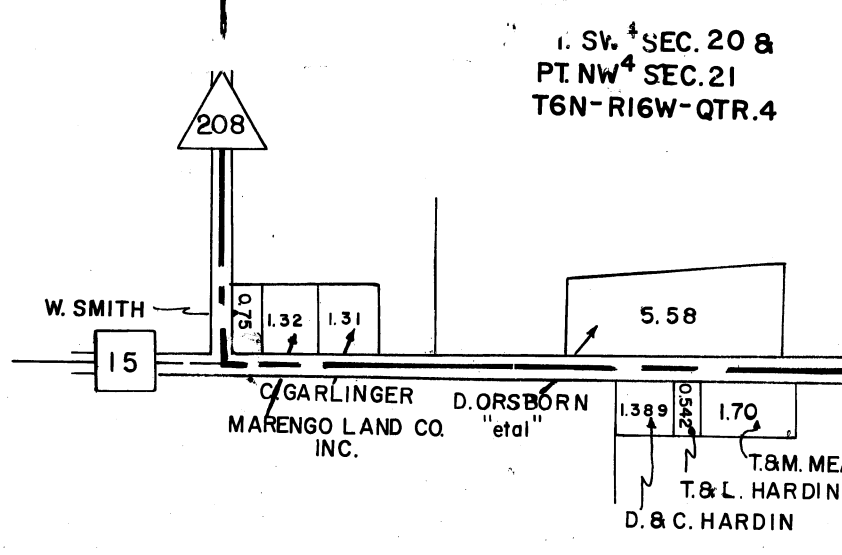


Peru Twp.

SOUTH BLOOMFIELD TOWNSHIP

DELAWARE COUNTY

SCHOOL DISTRICT BOUNDARY LINE



- LEGEND**
- INTERSTATE ROUTE
 - FEDERAL HIGHWAYS
 - STATE HIGHWAYS
 - COUNTY ROADS
 - TOWNSHIP ROADS

Scale: 1" = 1320'

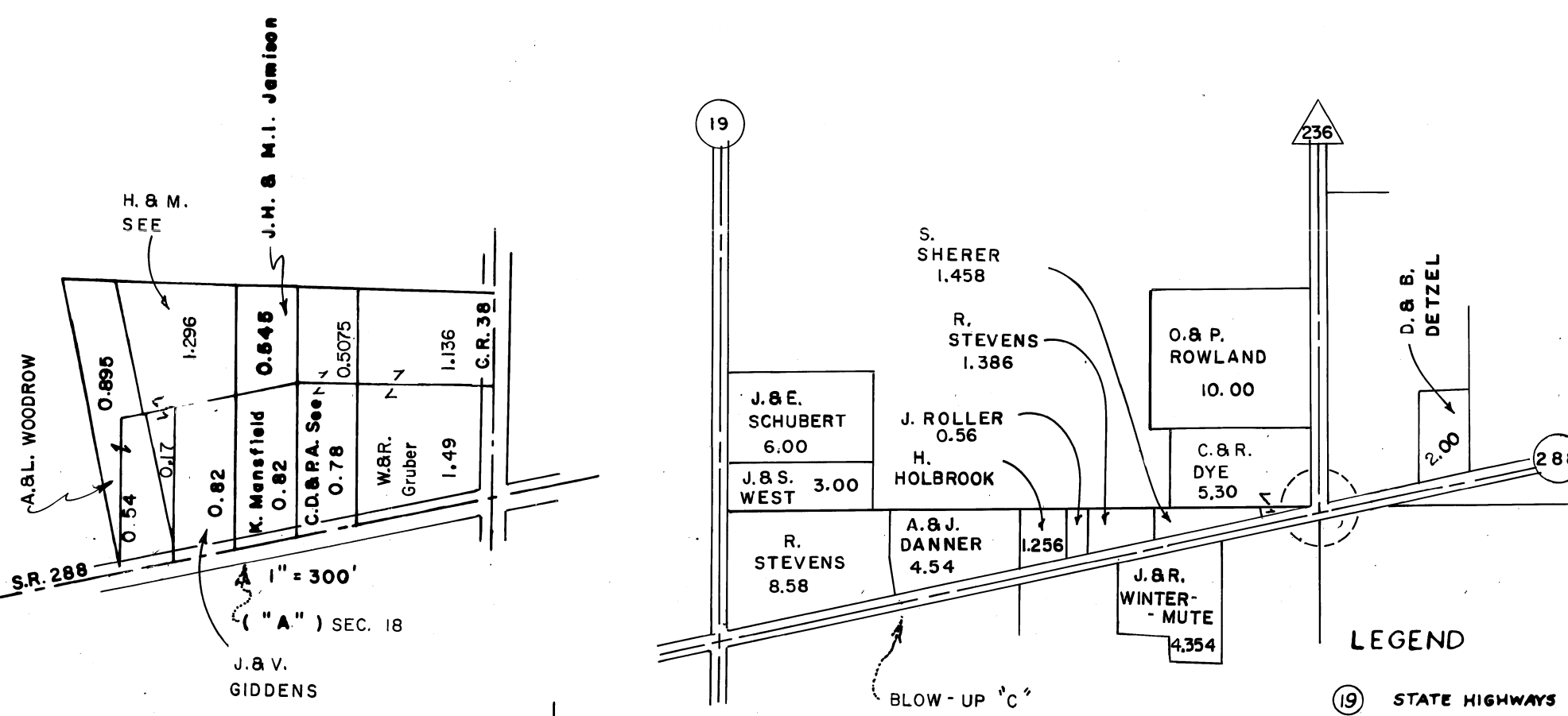
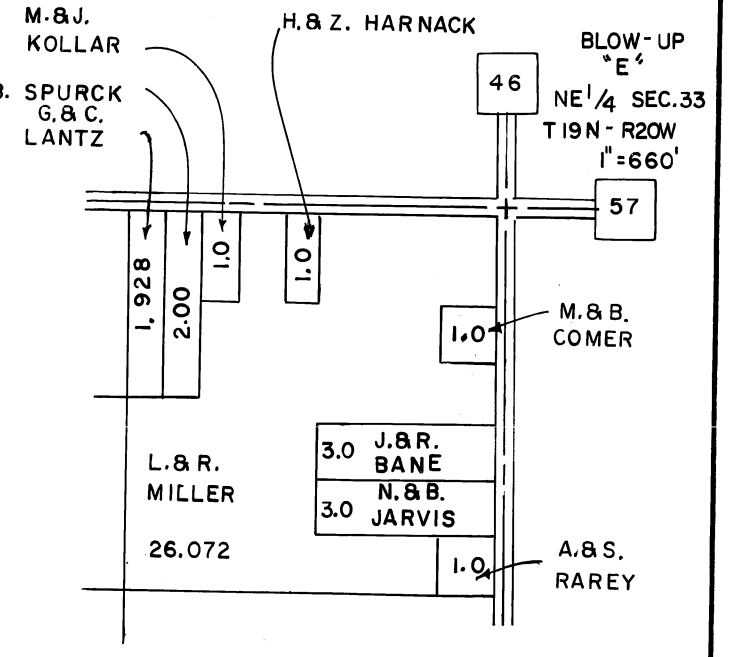
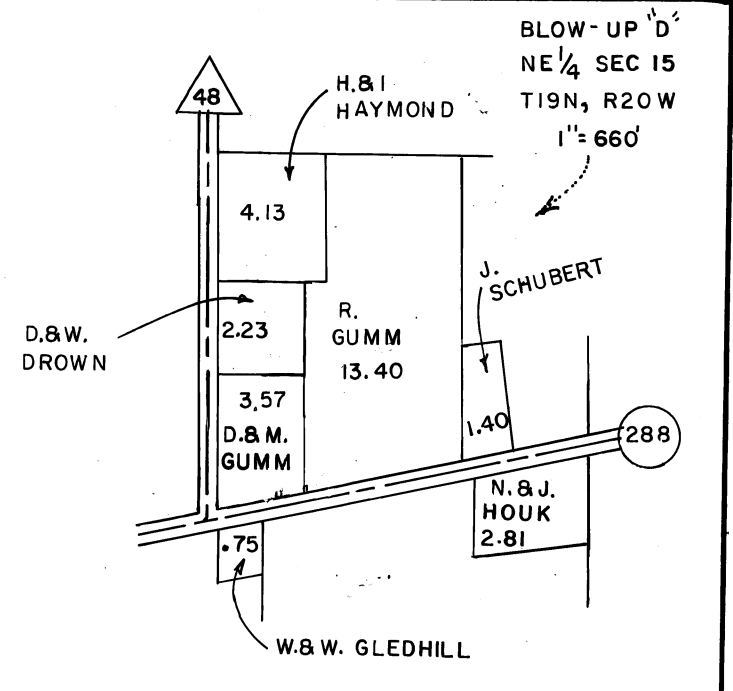
CURRENT AS OF 11-27-72 R.Owen

Prepared by
Morrow County Engineer's Office
Justin Earley - County Engineer
1963

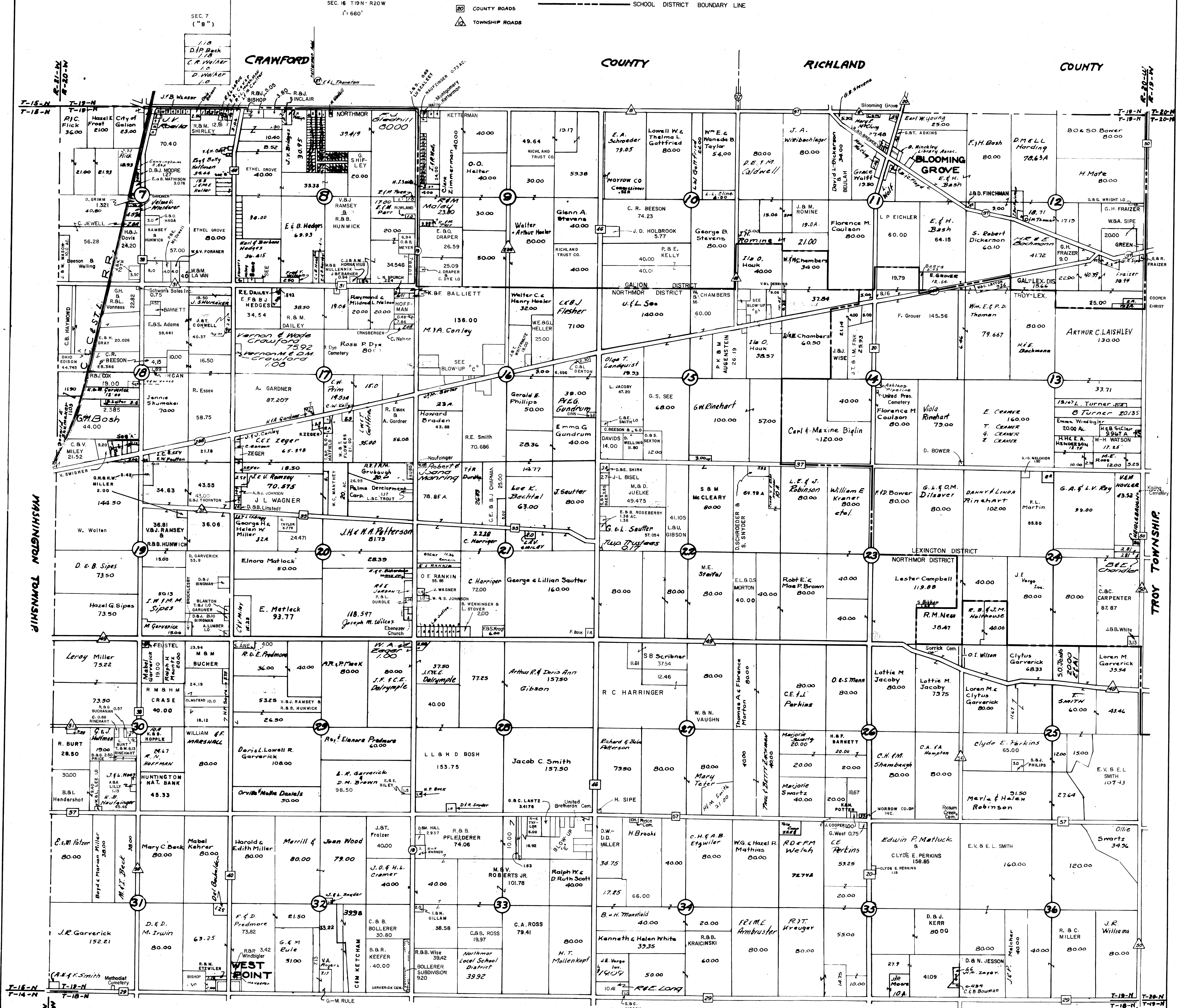
BENNINGTON TOWNSHIP

N. BLOOMFIELD TOWNSHIP

Prepared by
Morrow County Engineer's Office
Justin Earley - County Engineer
1963

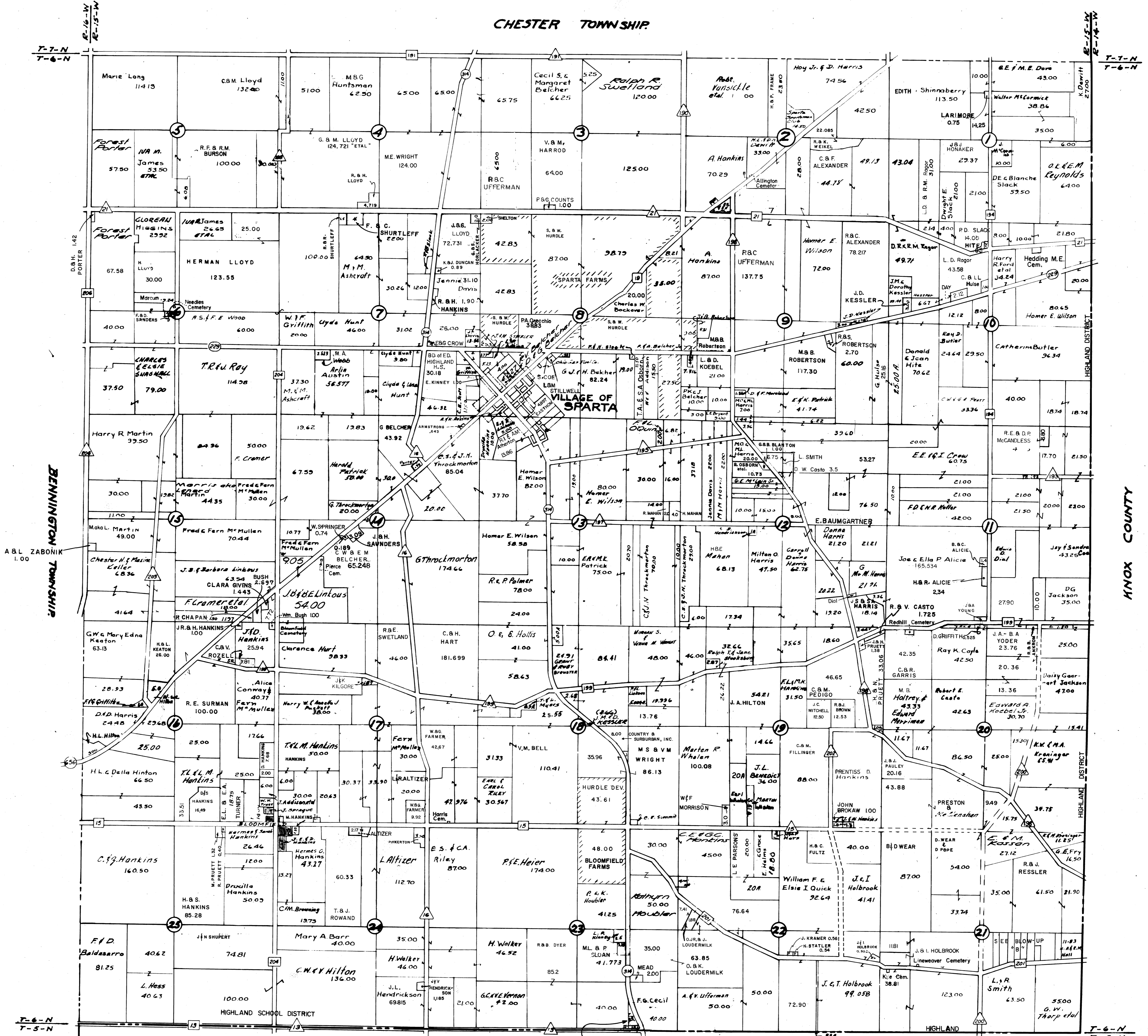


LEGEND
STATE HIGHWAYS
COUNTY ROADS
TOWNSHIP ROADS
SCHOOL DISTRICT BOUNDARY LINE



S. BLOOMFIELD TOWNSHIP

CHESTER TOWNSHIP



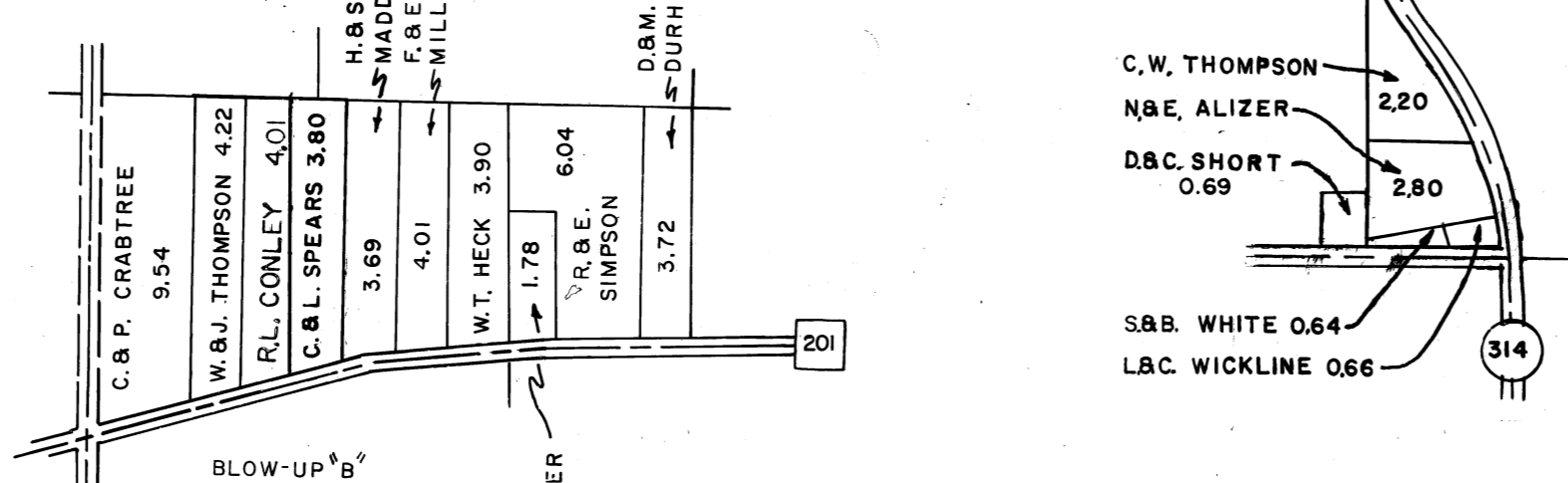
DELAWARE COUNTY

KNOX COUNTY

COUNTY

KNOX COUNTY

BLOW-UP "A"
S.M.P. SE4 Sec.23
T6N R18W



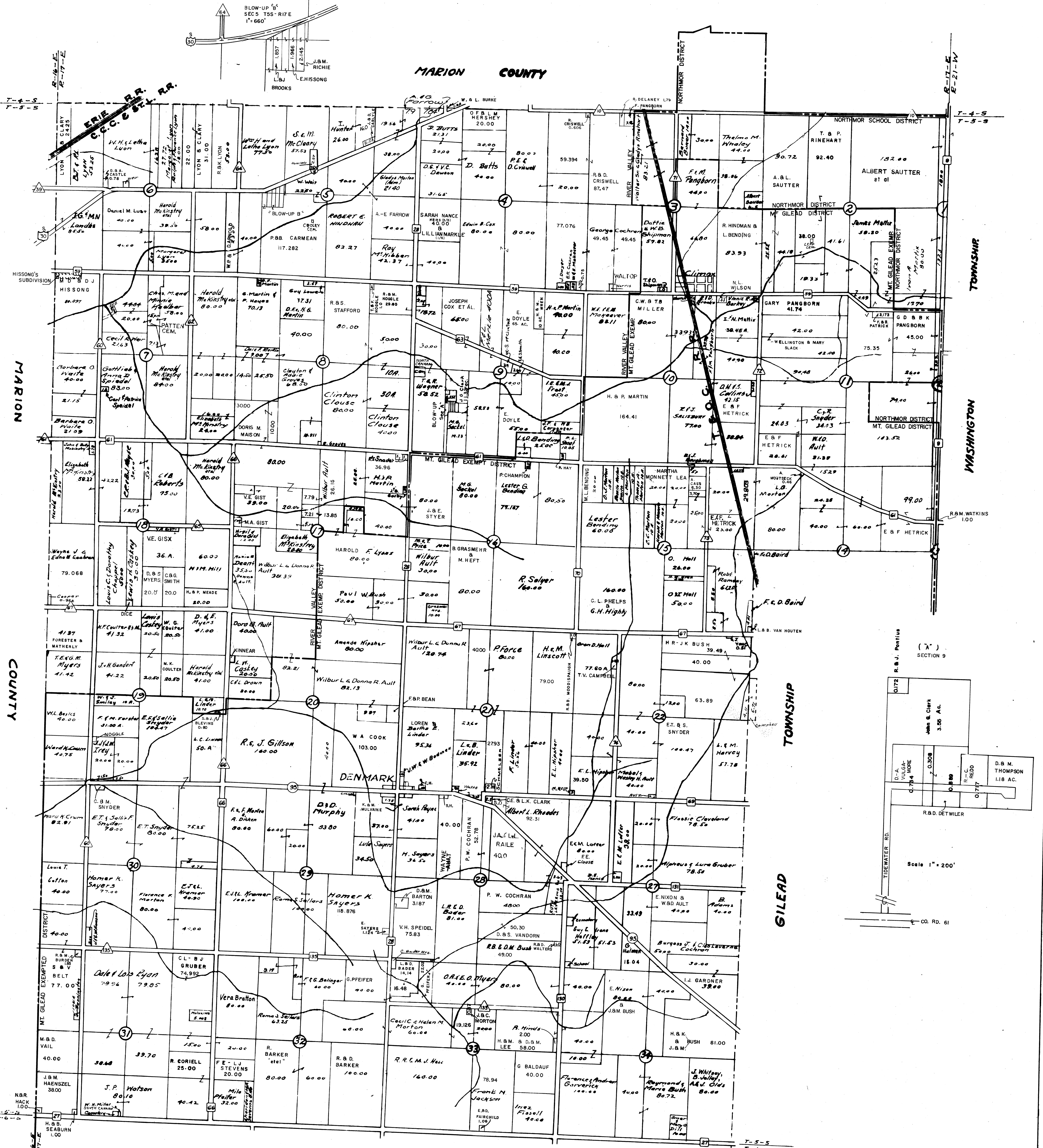
- LEGEND
- ④ STATE HIGHWAYS
 - ⑦ COUNTY ROADS
 - ② TOWNSHIP ROADS
 - SCHOOL DISTRICT BOUNDARY LINE

Scale: 1" = 1320'

Prepared by
Morrow County Engineer's Office
Justin Earley — County Engineer
1963

S. BLOOMFIELD TWP
CURRENT AS OF 12/21/73 J. CURTIS & R. BUSH

CANAAN TOWNSHIP



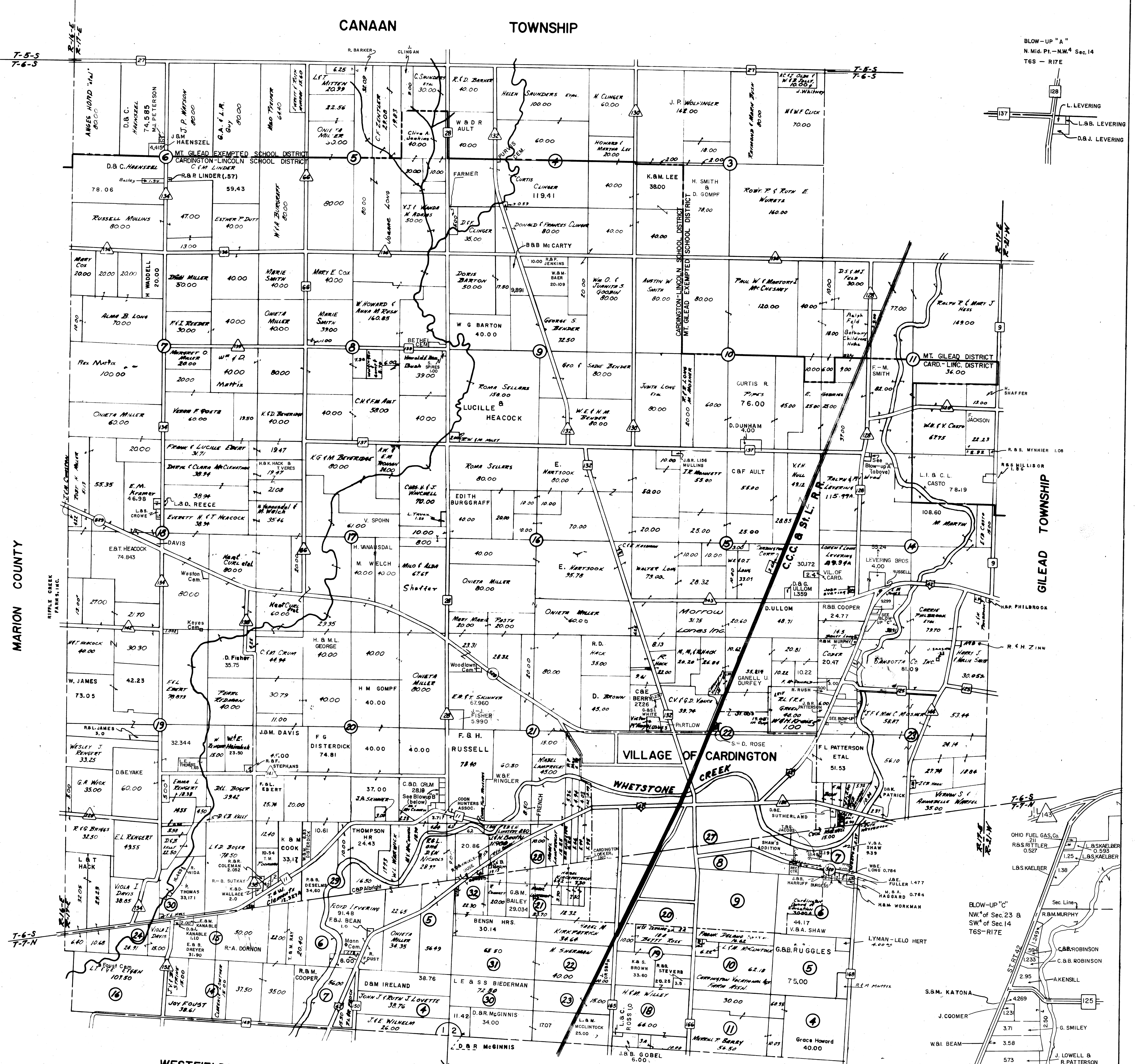
LEGEND
 FEDERAL HIGHWAYS
 STATE HIGHWAYS
 COUNTY ROADS
 TOWNSHIP ROADS
 SCHOOL DISTRICT BOUNDARY LINE

Scale: 1" = 1320'

Prepared by
 Morrow County Engineer's Office
 Justin Earley - County Engineer
 1963

CANAAN TOWNSHIP
 CURRENT AS OF 11-27-72 McLain & Owen

CARDINGTON TOWNSHIP



BLOW-UP "A"
N. Mid. Pt. - N.W. 1/4 Sec. 14
T6S - R17E

T-5-S
T-6-S

T-6-S
T-7-N

BLOW-UP "B"
S.E. 1/4 Sec. 20
T6S - R17E

A. & V. MCGULLOUGH 0.777
R. B. H. HOLLANDSWORTH 0.918
R. B. A. STEPHENS 1.870
W. BANKS SR. 1.390

- LEGEND**
- FEDERAL HIGHWAYS
 - STATE HIGHWAYS
 - COUNTY ROADS
 - TOWNSHIP ROADS

Scale: 1" = 1320'

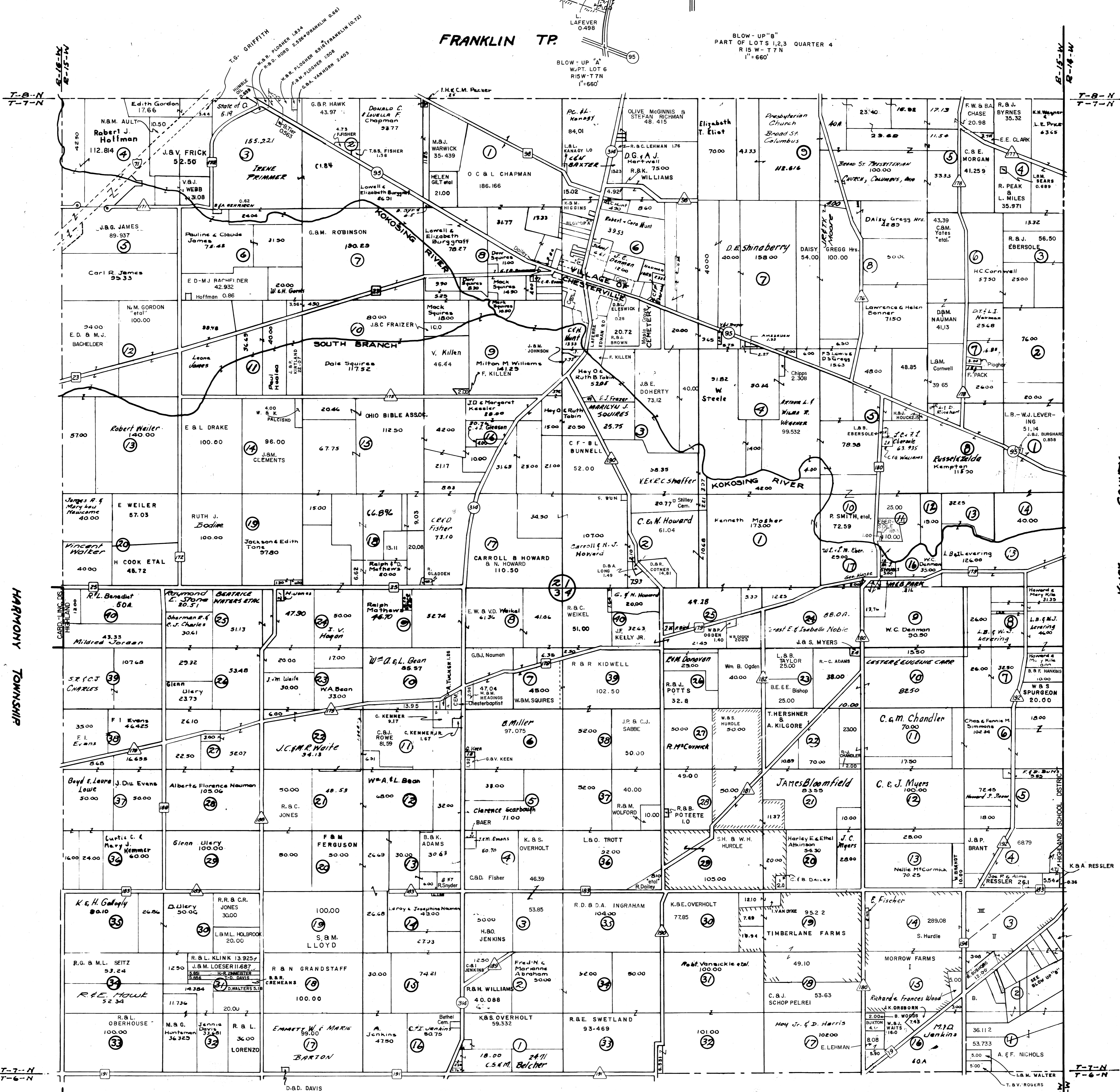
CARDINGTON TWP
Prepared by
Morrow County Engineer's Office
Justin Earley - County Engineer
1967

CHESTER TOWNSHIP

Prepared by
Morrow County Engineer's Office
Justin Earley - County Engineer
1963

FRANKLIN TP.

BLOW-UP "B"
PART OF LOTS 1, 2, 3 QUARTER 4
R 15 W - T 7 N
1" = 660'



HARMONY TOWNSHIP

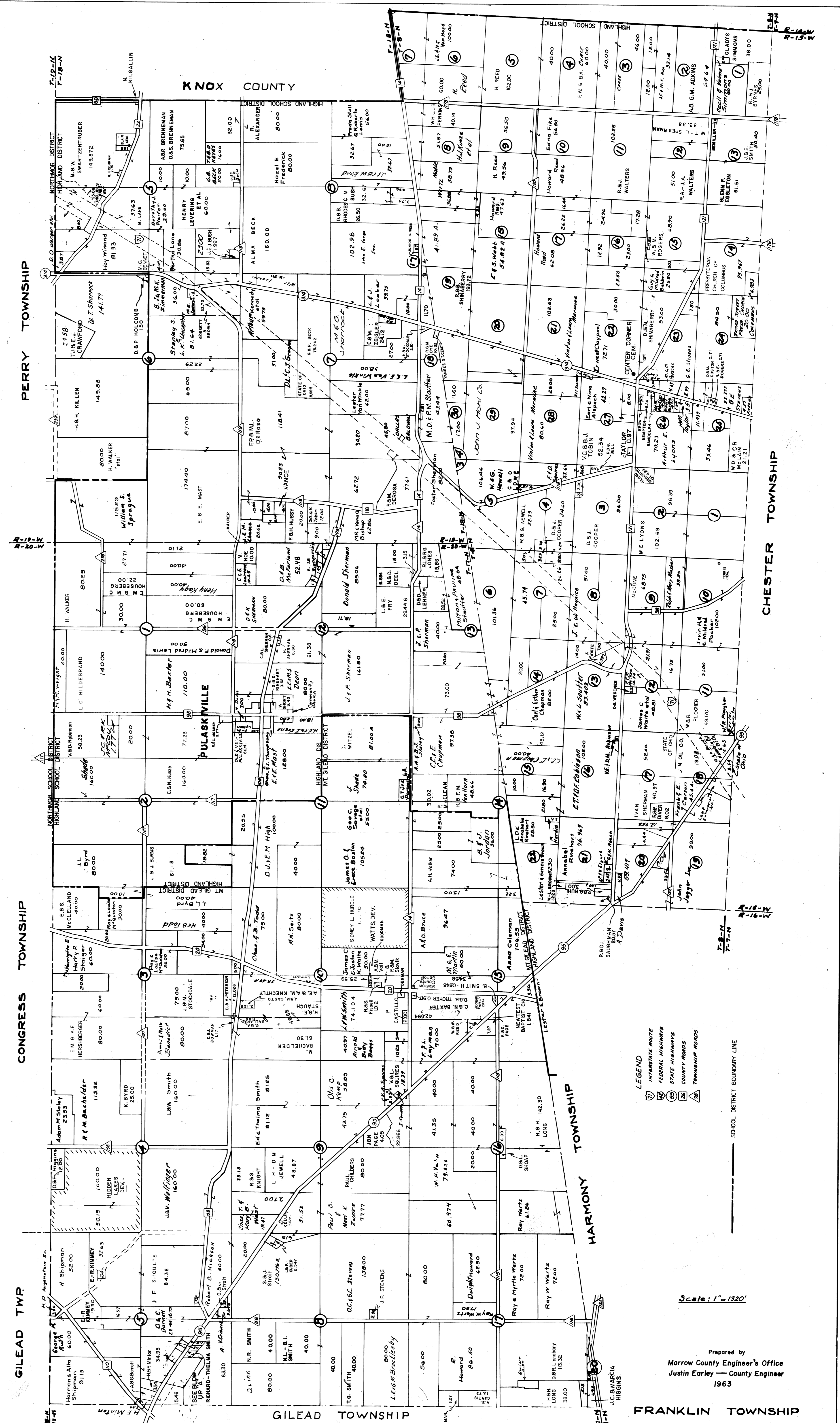
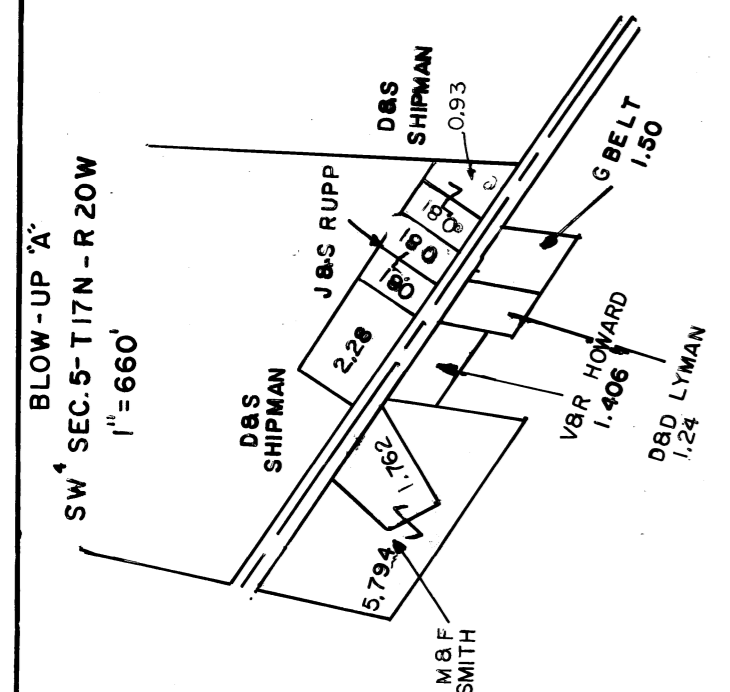
MORROW COUNTY

SOUTH BLOOMFIELD TWP

LEGEND
① INTERSTATE ROUTE
② STATE HIGHWAYS
③ COUNTY ROADS
④ TOWNSHIP ROADS
--- SCHOOL DISTRICT BOUNDARY LINE
Scale: 1" = 1320'

CHESTER TOWNSHIP
CURRENT AS OF 12/21/73 R. BUSH

FRANKLIN TOWNSHIP



LEGEND
INTERSTATE ROUTE
FEDERAL HIGHWAYS
STATE HIGHWAYS
COUNTY ROADS
TOWNSHIP ROADS

SCHOOL DISTRICT BOUNDARY LINE

Scale: 1"=1320'

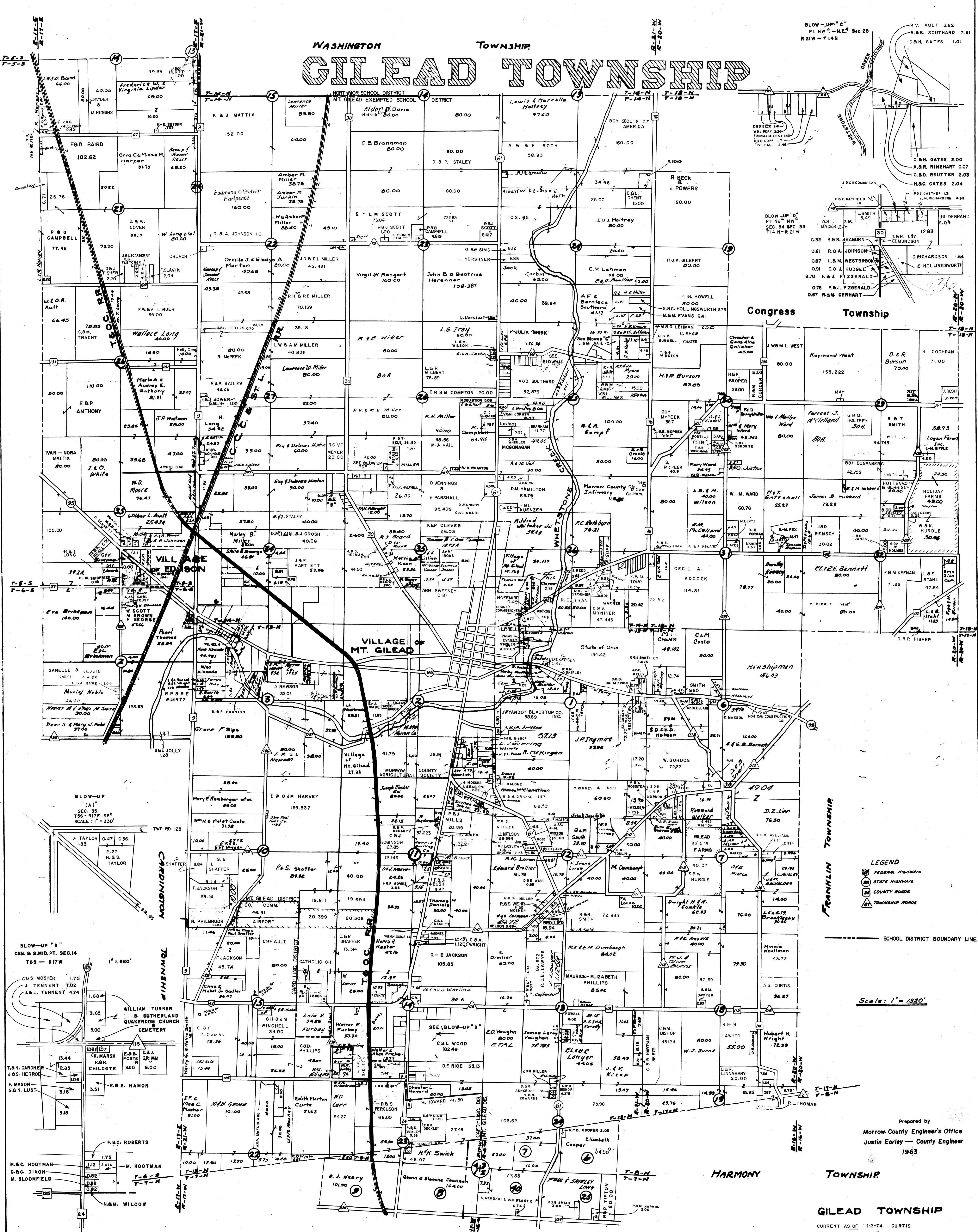
Prepared by
Morrow County Engineer's Office
Justin Earley — County Engineer
1963

FRANKLIN TOWNSHIP

CURRENT AS OF 12-21-73 McLAIN

WASHINGTON TOWNSHIP GILEAD TOWNSHIP

BLOW-UP "C"
P. 1 NW 1/4 - NE 1/4 Sec. 25
R. 21 W - T. 14 N
P.V. AULT 3.62
A.B.B. SOUTHWARD 7.31
C.H. GATES 1.01



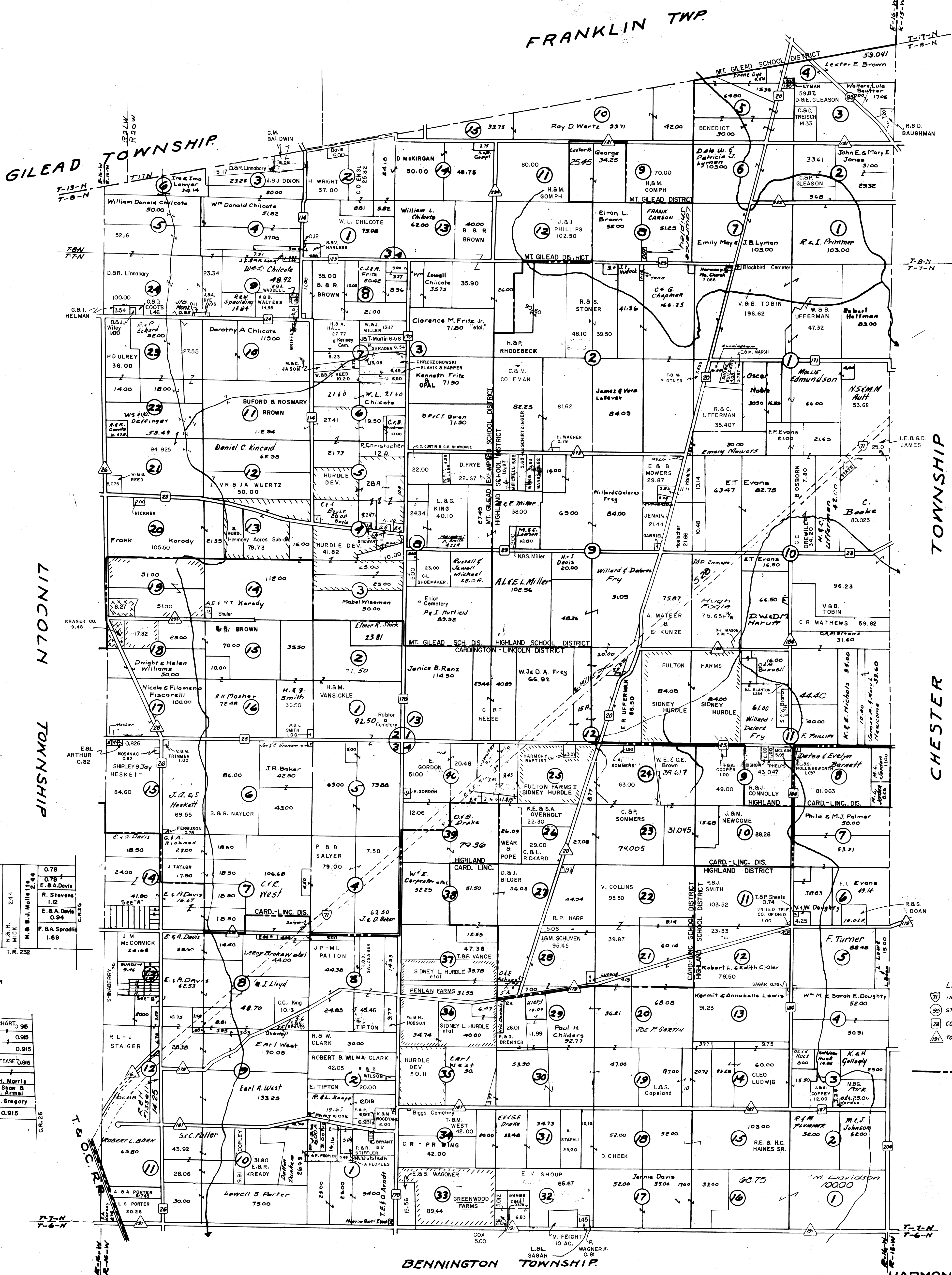
LEGEND
FEDERAL HIGHWAYS
STATE HIGHWAYS
COUNTY ROADS
TOWNSHIP ROADS
SCHOOL DISTRICT BOUNDARY LINE

Scale: 1" = 1320'

Prepared by
Morrow County Engineer's Office
Justin Earley - County Engineer
1963

GILEAD TOWNSHIP
CURRENT AS OF 1-2-74 CURTIS

HARMONY TOWNSHIP



Scale 1" = 400'

B. Brennan	2.44	0.78
L. Blomquist	2.44	0.78
E. Hines	2.44	0.78
C.B.P. Davis	2.44	0.78
V.B.D. Davis	2.44	0.78
R.B.R. Mick	2.44	0.78
H.B.B.J. Hollis	2.44	0.78
F.S.A. Spradley	1.69	0.78
T.R. 232		

("A")
LOT 14 3rd QTR

GEARHART	0.95
	0.95
	0.95
M.J. FEASE	0.95

B. Cheaton	0.89	J.H. Morris
R. PARTNER	1.78	H. Shaw & R. Armai
	0.915	E. Gregory
	0.915	

("B")
LOT 13 3rd QTR

- LEGEND
- (7) INTERSTATE ROUTE
 - (35) STATE HIGHWAYS
 - (28) COUNTY ROADS
 - (19) TOWNSHIP ROADS
 - SCHOOL DISTRICT BOUNDARY LINE

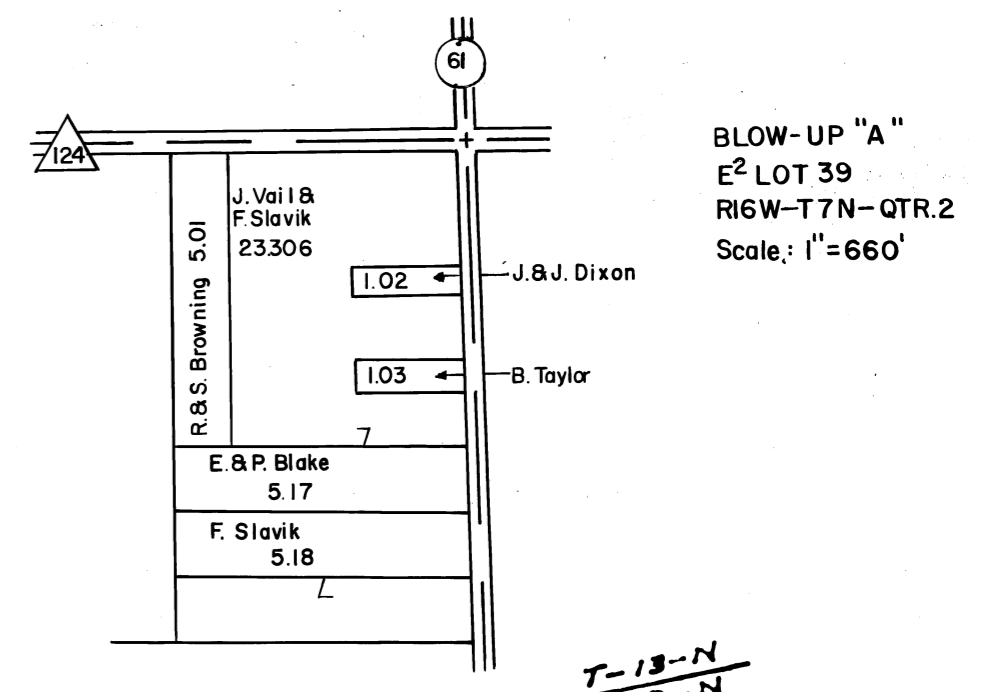
Scale: 1" = 1320'

Prepared by
Morrow County Engineer's Office
Justin Earley - County Engineer
1963

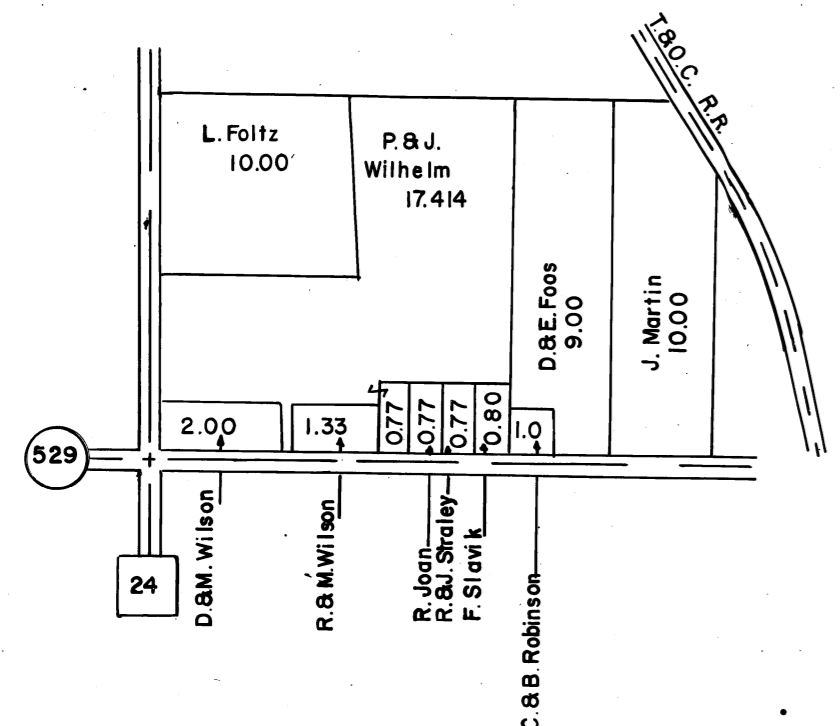
HARMONY TOWNSHIP

CURRENT AS OF 12-21-73 McLAIN

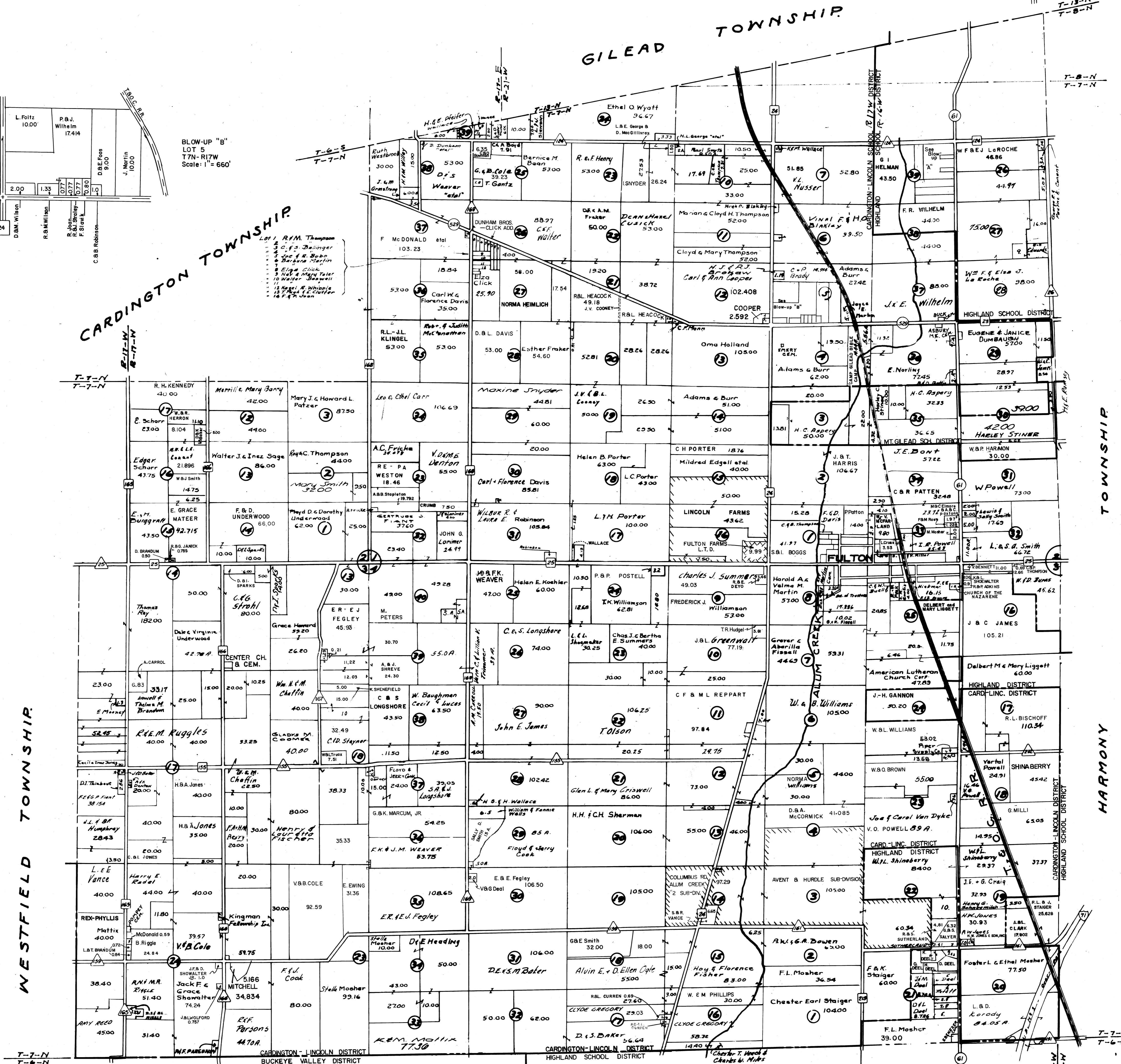
LINCOLN TOWNSHIP



BLOW-UP "A"
E. LOT 39
RW-7-N-CTR.2
Scale: 1"=660'



BLOW-UP "B"
LOT 5
T-7-N-R17W
Scale: 1"=660'



WESTFIELD TOWNSHIP

CARDINGTON TOWNSHIP

GILEAD TOWNSHIP

TOWNSHIP

TOWNSHIP

HARMONY

BENNINGTON TOWNSHIP

PERU TOWNSHIP

LEGEND
INTERSTATE ROUTE
STATE HIGHWAYS
COUNTY ROADS
TOWNSHIP ROADS
SCHOOL DISTRICT BOUNDARY LINE

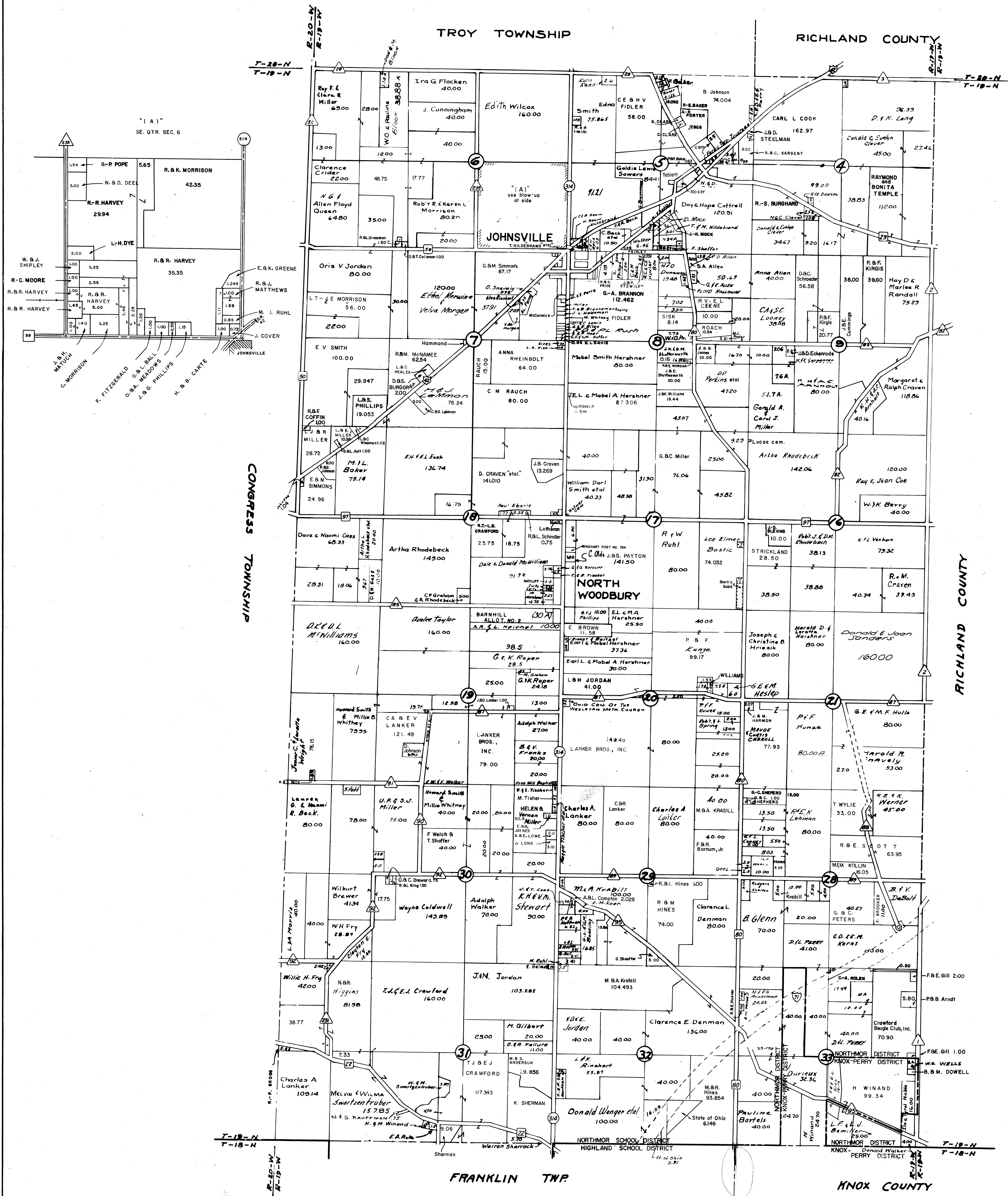
Scale: 1"=1320'

Prepared by
Morrow County Engineer's Office
Justin Earley - County Engineer
1963

LINCOLN TOWNSHIP

CURRENT AS OF 11-27-72 ROWEN

PERRY TOWNSHIP



LEGEND

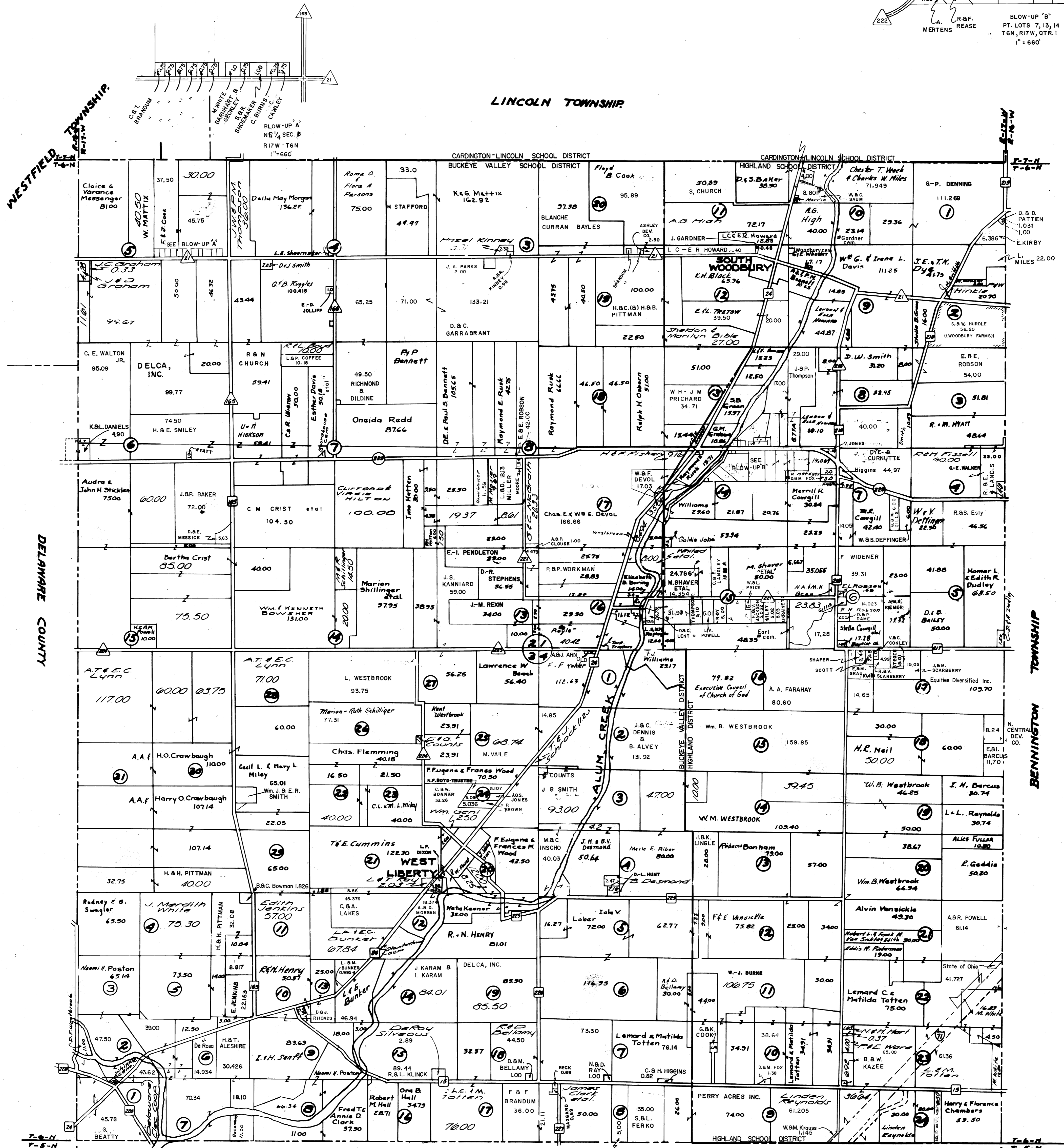
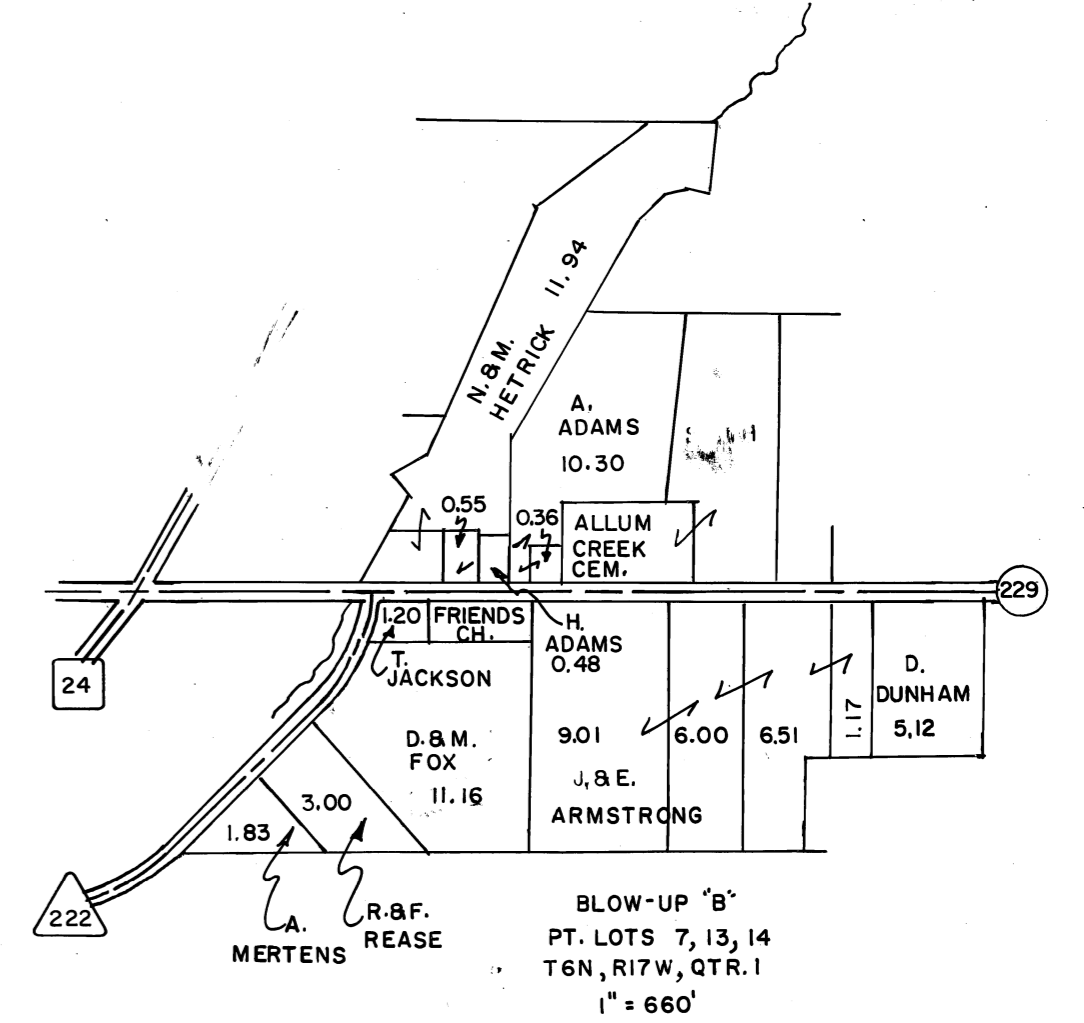
- INTERSTATE ROUTE
- FEDERAL HIGHWAYS
- STATE HIGHWAYS
- COUNTY ROADS
- TOWNSHIP ROADS
- SCHOOL DISTRICT BOUNDARY LINE

Scale: 1" = 1320'

Prepared by
 Morrow County Engineer's Office
 Justin Earley—County Engineer
 1963

PERRY TOWNSHIP

PERU TOWNSHIP



DELANARE COUNTY

LEGEND

- INTERSTATE ROUTE
- STATE HIGHWAYS
- COUNTY ROADS
- TOWNSHIP ROADS
- SCHOOL DISTRICT BOUNDARY LINE

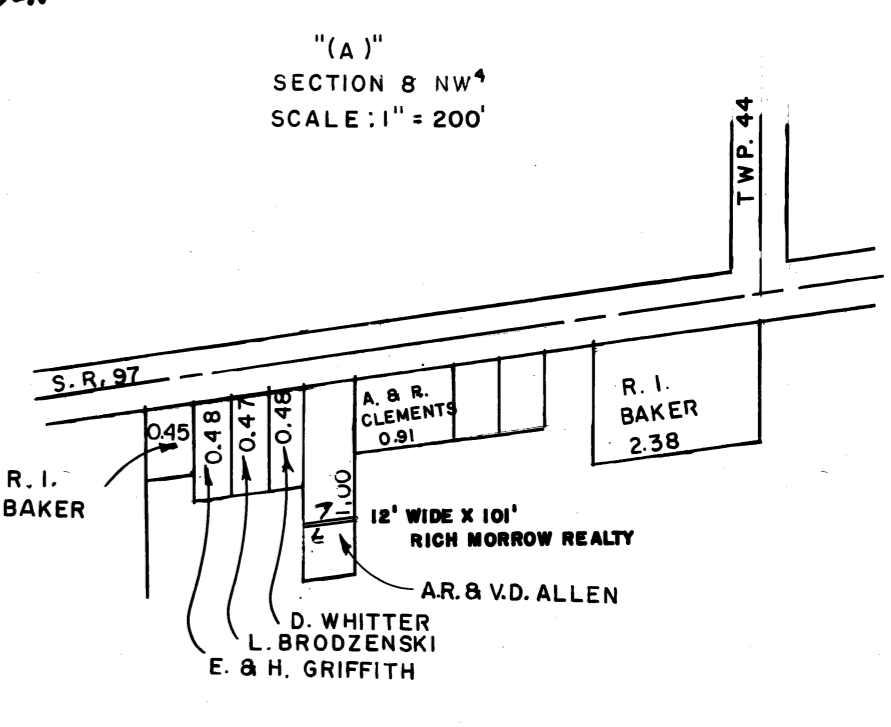
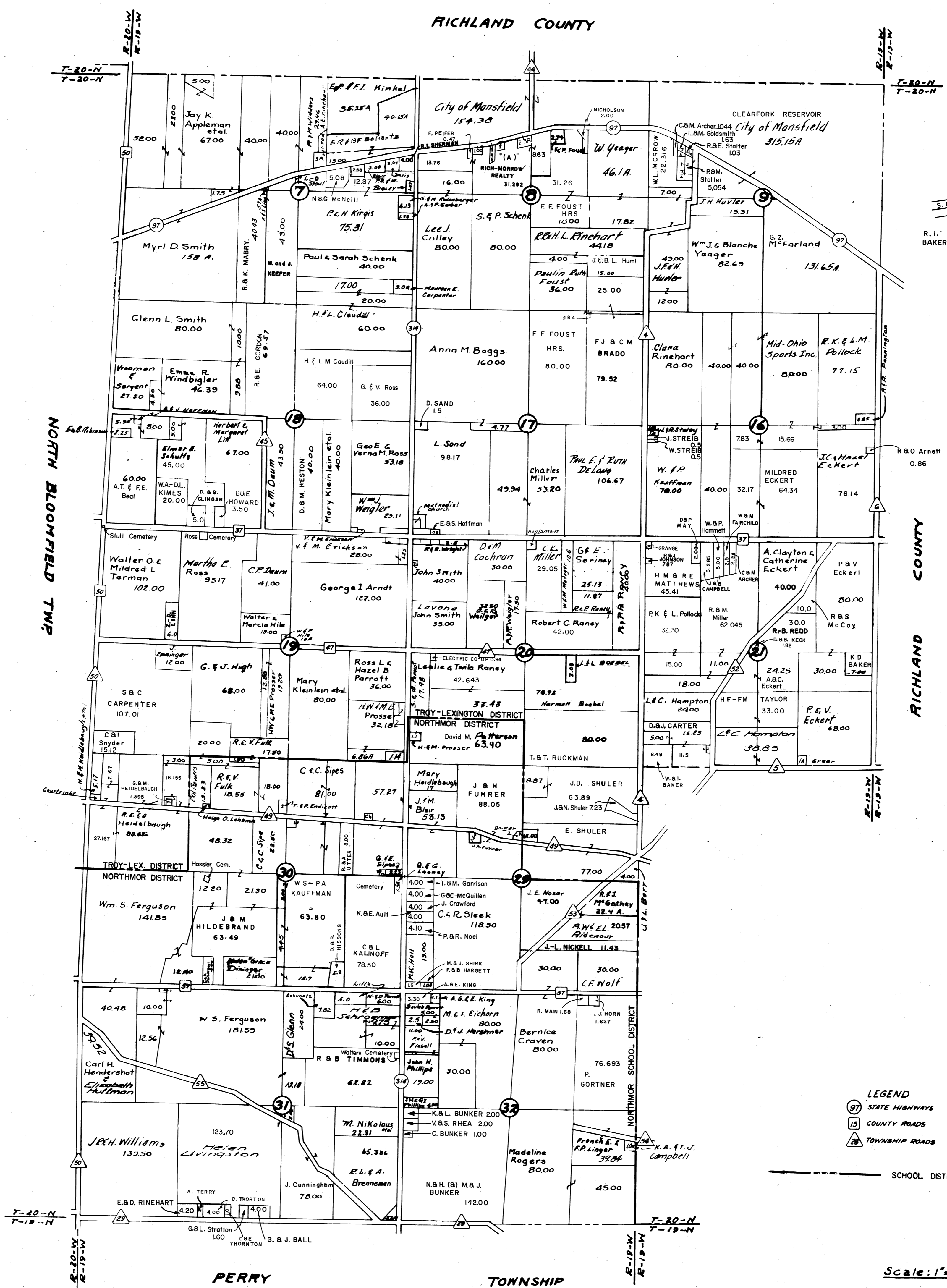
Scale: 1" = 1320'

Prepared by
Morrow County Engineer's Office
Justin Earley — County Engineer
1963

PERU TOWNSHIP

CURRENT AS OF: 12-21-73; MCLAIN

TROY TOWNSHIP



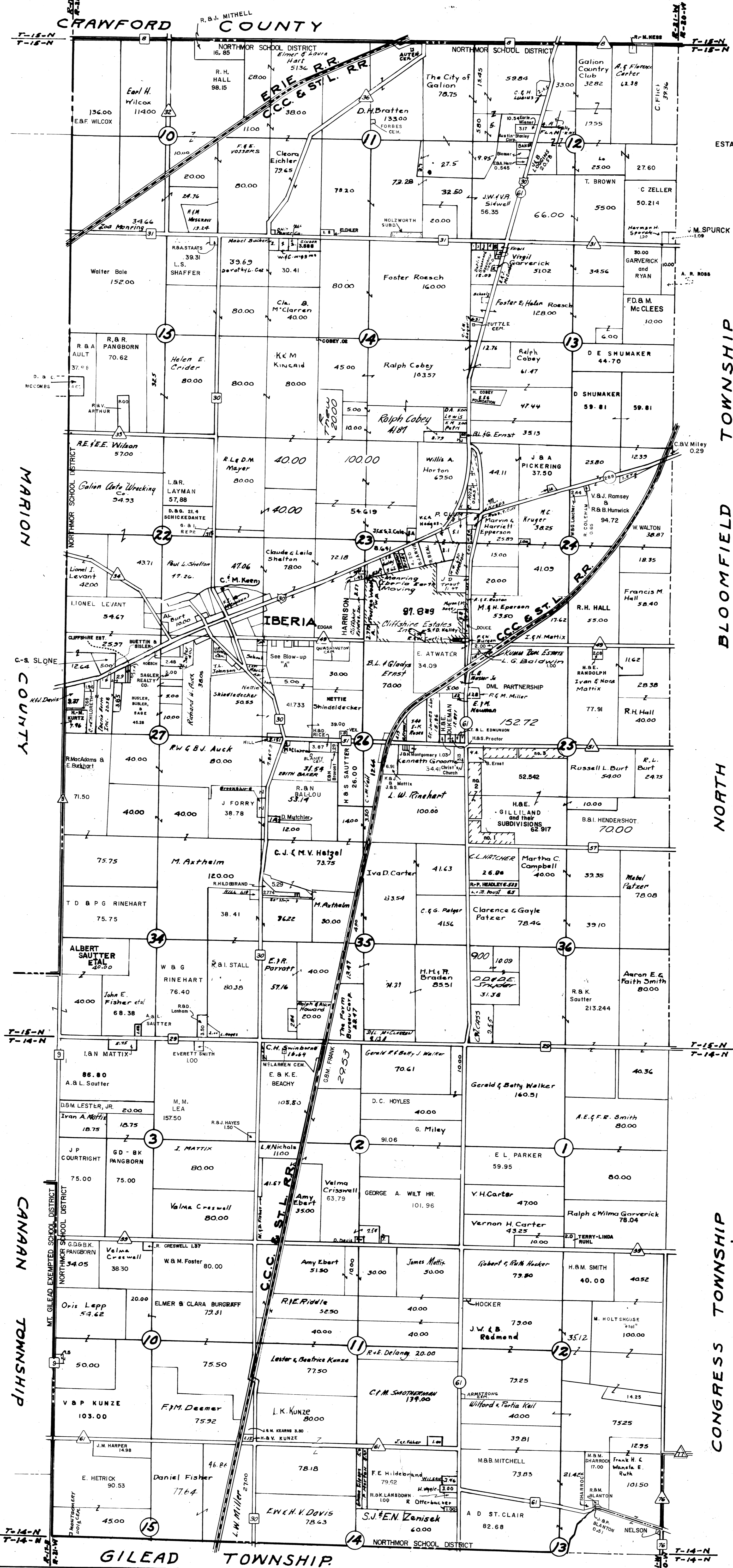
LEGEND
 97 STATE HIGHWAYS
 15 COUNTY ROADS
 28 TOWNSHIP ROADS
 --- SCHOOL DISTRICT BOUNDARY LINE

Scale: 1" = 1920'

Prepared by
 Morrow County Engineer's Office
 Justin Earley — County Engineer
 1963

TROY TOWNSHIP
 CURRENT AS OF 11/27/72 OWEN & FISHER

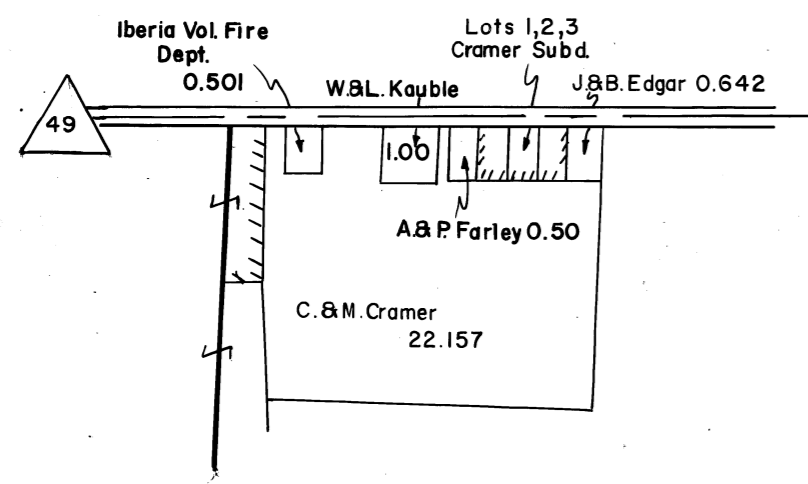
WASHINGTON TOWNSHIP



CLIFFSHIRE ESTATES

ESTATES by Number

4	Suzanne C. B. Donald E. Kelley	1.79 Ac.
27	Eugene C. B. Rita Newell	1.80 Ac.
7	James E. B. Helon A. Haas	1.10 Ac.



BLOW-UP "A"
NW 1/4 SEC. 26
T15N-R21W
1" = 660'

- LEGEND
- FEDERAL HIGHWAYS
 - STATE HIGHWAYS
 - COUNTY ROADS
 - TOWNSHIP ROADS

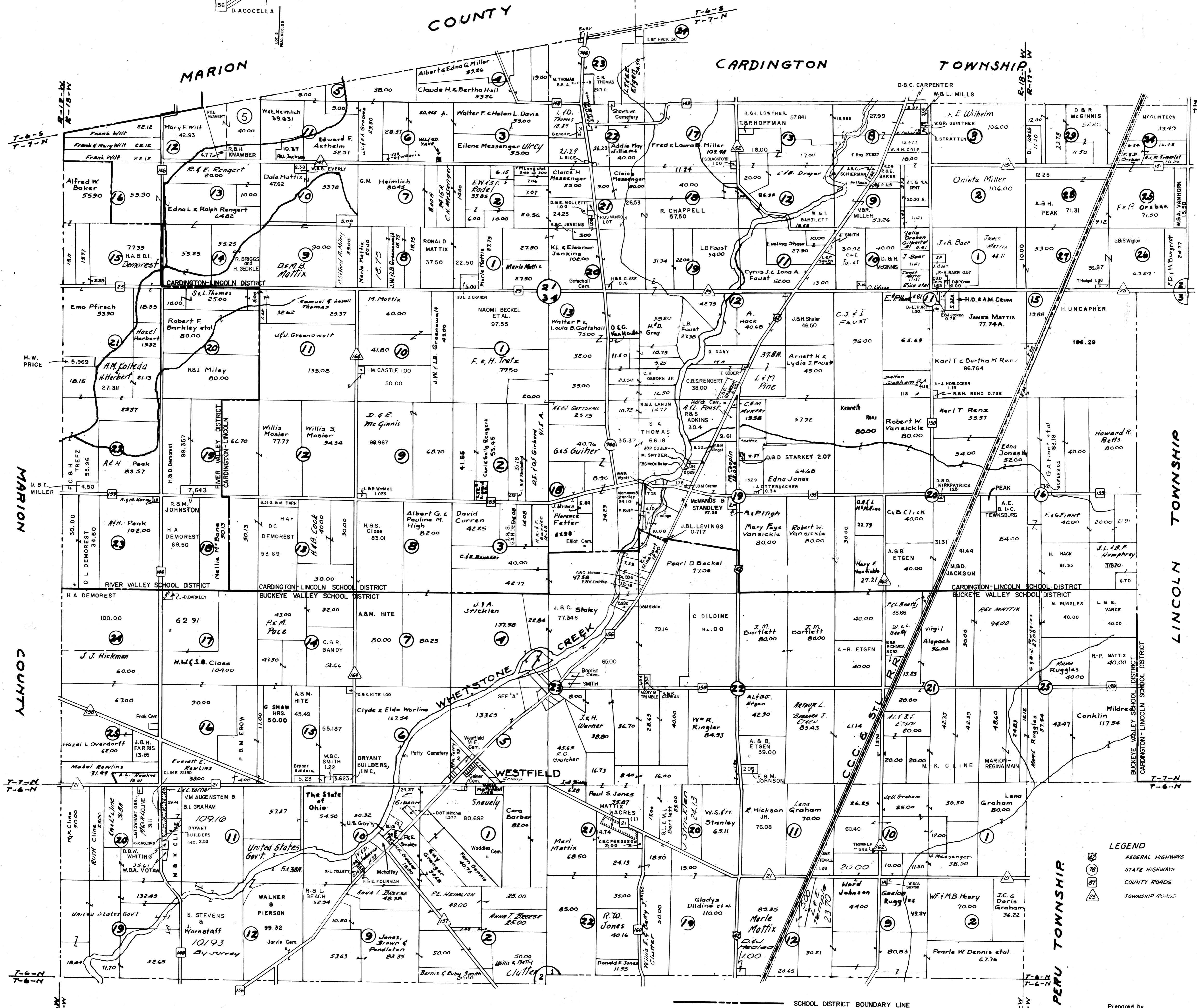
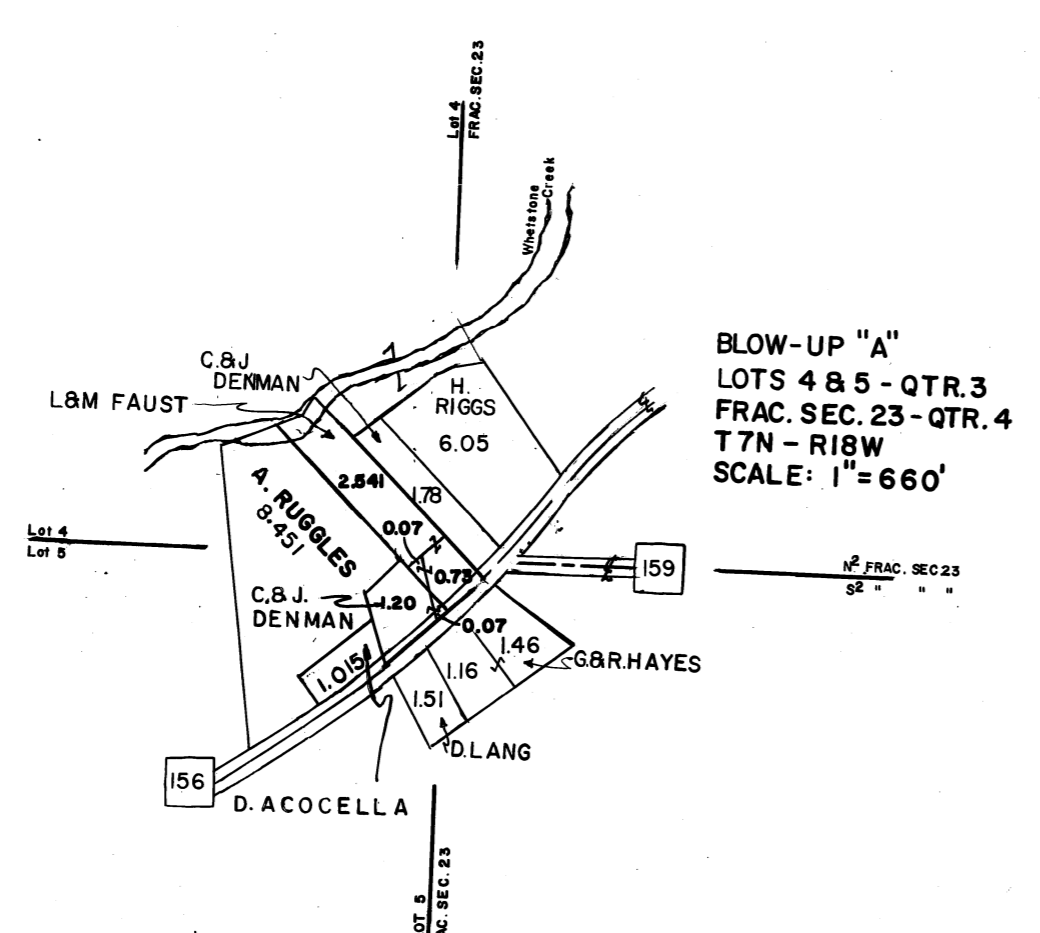
Scale: 1" = 1320'

Prepared by
Morrow County Engineer's Office
Justin Earley - County Engineer
1963

WASHINGTON TOWNSHIP

CURRENT AS OF 11-27-72. ROWEN

WESTFIELD TOWNSHIP



- LEGEND**
- FEDERAL HIGHWAYS
 - STATE HIGHWAYS
 - COUNTY ROADS
 - TOWNSHIP ROADS

DELAWARE COUNTY

Scale: 1" = 1320'

Prepared by
 Morrow County Engineer's Office
 Justin Earley - County Engineer
 1963

WESTFIELD TOWNSHIP
 CURRENT AS OF 12-21-73 J.R. BUSH